

SIEMENS

Siemens PLM Software

SOLID EDGE

Installation guide for student and high school editions

Thank you for using Solid Edge® software.

This document is for students of all ages, or educators and school officials in secondary education that are using either the Solid Edge Student Edition or Solid Edge High School Edition for academic purposes, and provides information on how to install and license Solid Edge.

Following registration, you will receive an email that welcomes you to the Solid Edge Academic Program and includes software download instructions; a URL web link to download your Solid Edge software (in your selected language) and your Academic Code. For students, this Academic Code is assigned to the registered student; for schools, this Academic Code is assigned to the school. If you have not received the welcome email, or if the download link or Academic Code is missing, please contact the Solid Edge Academic Program staff using one of the following emails.

Americas: solidedgeacademic-am.plm@siemens.com

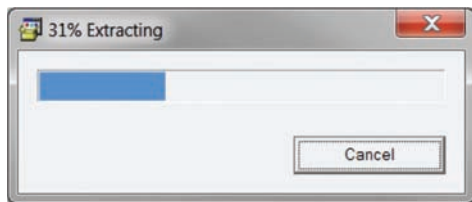
Asia Pacific: solidedgeacademic-ap.plm@siemens.com

Europe, Middle East, Africa: solidedgeacademic-emea.plm@siemens.com

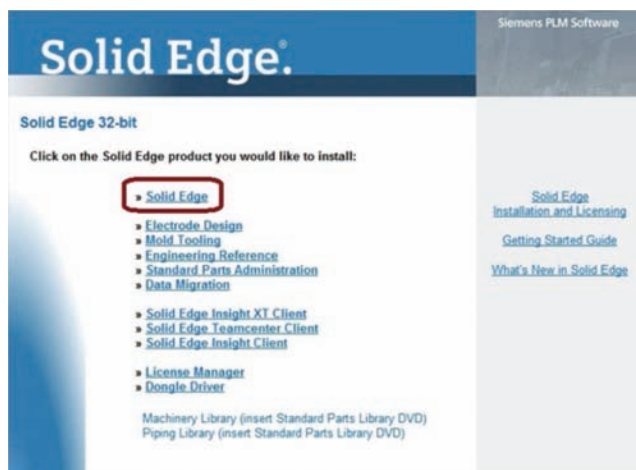
Before you proceed, please:

1. Read through the welcome email and follow the download instructions. Save the Solid Edge install executable (for example, Solid EdgeV106English_32Bit.exe) to your local disk.
2. Keep a record of the Solid Edge Academic Code that is in the welcome email or keep a copy of the email available. After installing Solid Edge, you will need the Solid Edge Academic Code to complete the licensing steps.
3. Ensure your computer meets the required specifications:
http://www.plm.automation.siemens.com/en_us/products/velocity/solidedge/overview/system_requirements.shtml
4. For registered secondary schools that would like to install their copy of Solid Edge High School Edition on a number of computers, the installation instructions that follow can be repeated on each computer, or you can reference the **Silent** (or Remote) **Installs** section of the C:/program Files (x86)/Solid Edge ST6/readme.htm file for command line instructions for silently installing Solid Edge.

Installing Solid Edge Student Edition and High School Edition

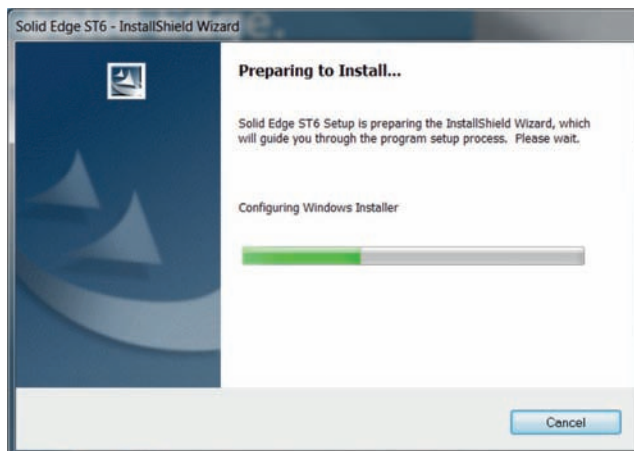


To begin the installation process, locate and double click on the SolidEdgeV106English_32Bit.exe you were instructed to download in the welcome email.



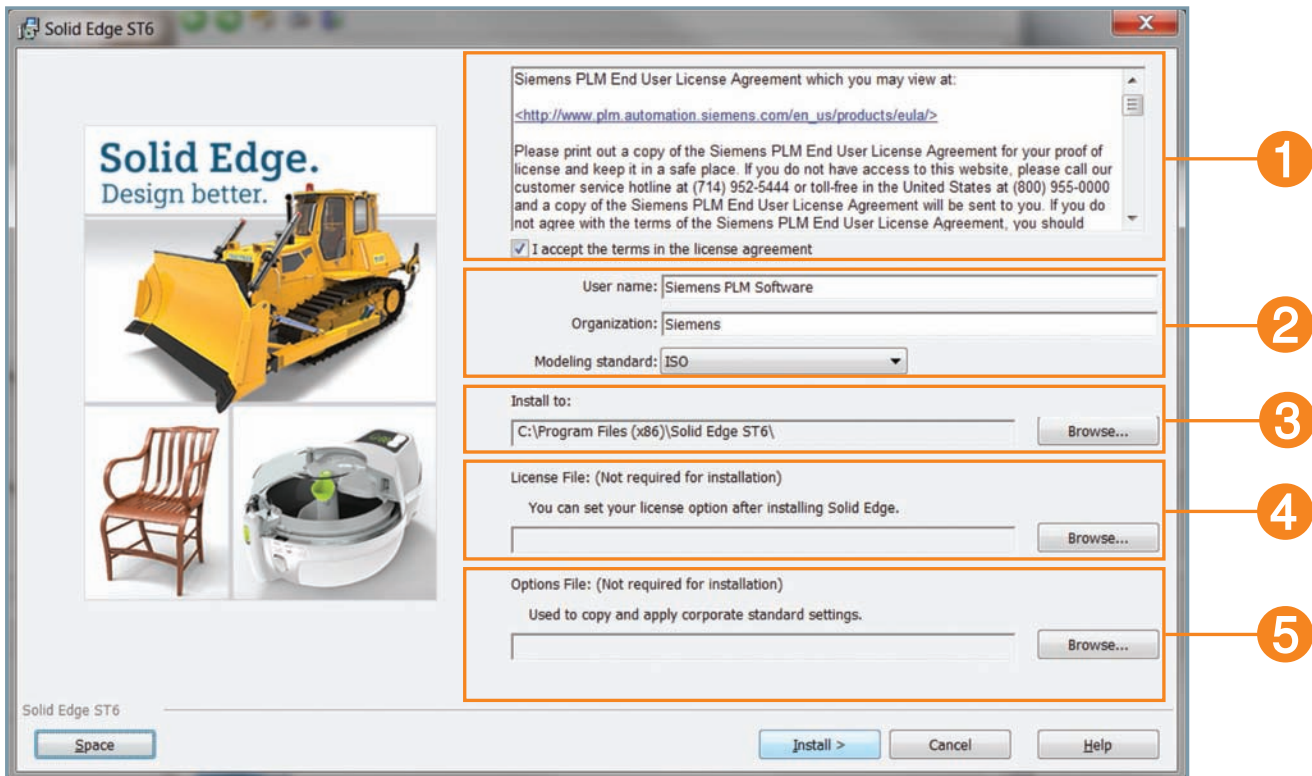
Once all of the installation files have been extracted, Solid Edge install will automatically launch and open the Solid Edge Product Installation dialog. Select Solid Edge as the product you would like to install.

NOTE: Installation may take several minutes depending on your hardware resources.



The Solid Edge InstallShield Wizard dialog will appear and begin configuring the Windows Installer.

If the expected error message is not displayed, the FMS server is not accessible from the iPad.



Once the Windows Installer is configured, the Solid Edge Wizard dialog will change.

In this new dialog you will:

1. Accept the Siemens PLM Software end user license agreement (EULA)
2. Select your required modeling standard (ISO, ANSI, DIN, etc.)
3. Select install location for Solid Edge
4. Check licensing options
5. Check disk space availability

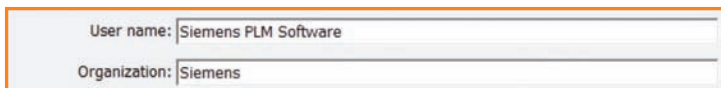


Section 1: End user license agreement

This section has a URL that you can copy and paste into your web browser to visit a website that has links to language-specific Siemens PLM Software end user license agreements. To proceed with the installation, you must accept the terms of the license agreement by selecting the check box.

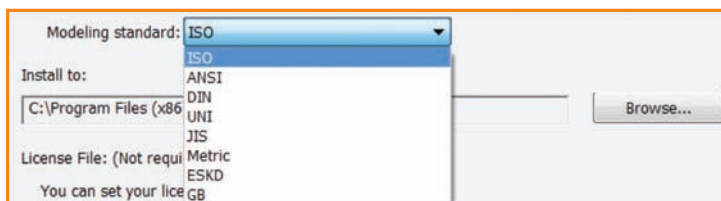
Section 2

You can enter a user name and organization that will be displayed in the Solid Edge splash screen and be used in other Solid Edge dialogs. Depending on how your computer is set up, these fields may already be populated. You can modify these fields as required.



Section 3

In this section you can select the modeling standard you wish to use. By default, it is set to ISO (metric). To change to another standard, click on the drop-down arrow and select your required standard. The modeling standard sets defaults for text, drawing formats, geometry, dimensions, units of measure, screw thread sizes and styles used in Solid Edge.

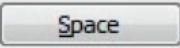


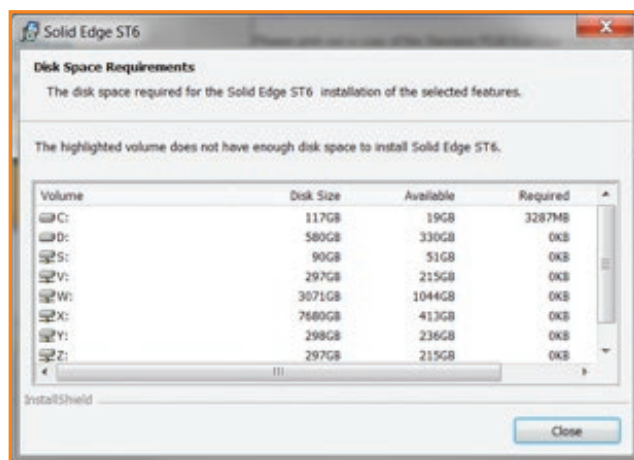
The available modeling standard options cover many of the standards used worldwide, including;

- ANSI: American National Standard Institute (inches and pounds)
- ISO: International Standard Organization (metric)
- DIN: Deutsches Institut für Normung (metric)
- JIS: Japanese Industrial Standard (metric)

Section 4

This section deals with where Solid Edge will be installed. The default location is C:/Program Files (x86)/Solid Edge ST6. Before accepting or changing the location, confirm that you have enough disk space available to install Solid Edge.

The  button at the bottom will display a dialog showing how much disk space you have on each hard drive and/or disk partition, and how much space is required for Solid Edge. Disk drives that do not have sufficient space will be highlighted. Do not try to install Solid Edge to that drive.



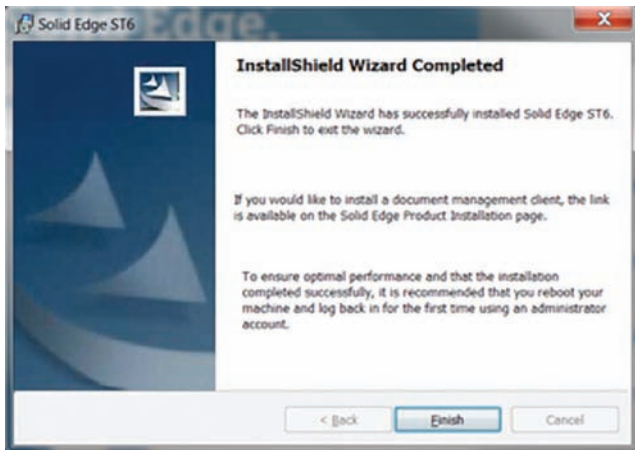
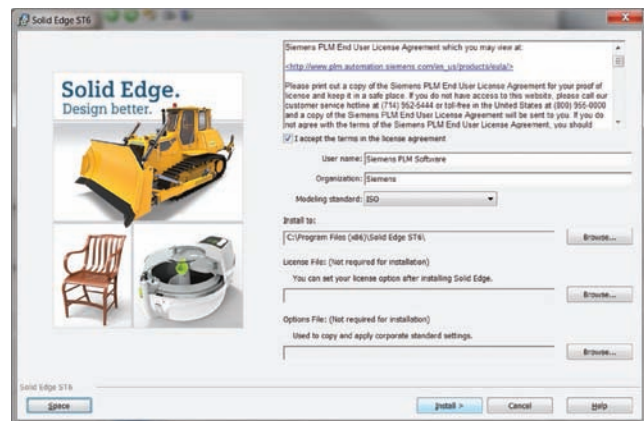
If C: does not have enough disk space available, select a drive volume that does have enough disk space and select the **Close** button.

Section 5

This section is not intended for typical Student or High School edition installations. Do not make any selections here. After installation has been completed, the first time you start Solid Edge you will be taken through the licensing phase and at that time you enter the **Academic Code** provided in the welcome email.

Now that you have made all of the necessary selections, start the installation process by selecting the **Install** button at the bottom of the dialog.

The installation process can take a while to complete based on your hardware resources.



Once installation has been completed, the InstallShield Wizard Completed dialog will appear. Click on the **Finish** button to complete the installation.

NOTE: Some builds of the Solid Edge ST6 Student Edition might automatically start a maintenance pack install. See the Automatic MP install in appendix A.

Troubleshooting

If you encounter a problem using the **Academic Code**, it's sometimes related to repeated attempts that cause the license utility to incorrectly format the required license feature in the default license file template delivered with Solid Edge.

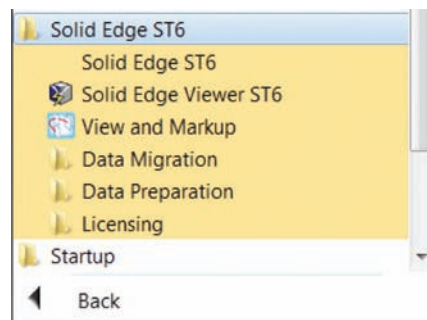
The workaround is to remove the existing SELicense.dat file from **\Program Files\Solid Edge ST6\Preferences** folder, start the license utility and enter the **Academic Code** again.

Getting started

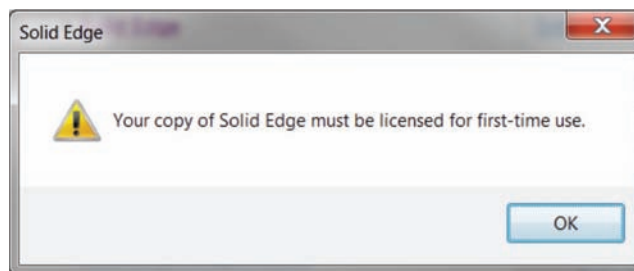
Depending on your operating system (OS) settings, upon completing the Solid Edge installation, you may have a Solid Edge icon on your desktop, and/or a Solid Edge ST6 entry in the startup list.

You can start Solid Edge from either the desktop icon, the startup entry, or you can select:

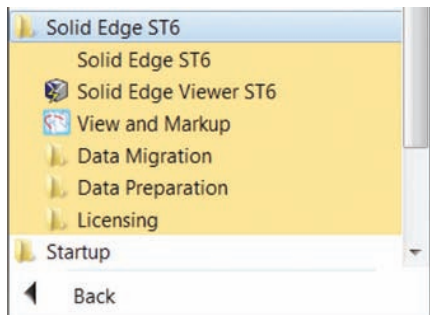
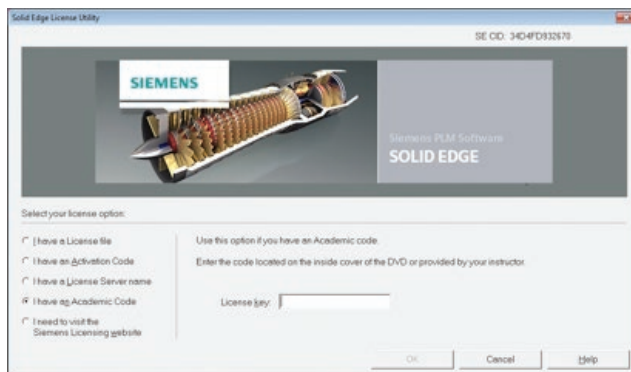
Start->All Programs->Solid Edge ST6->Solid Edge ST6



The first time Solid Edge is started after an install, you will get a dialog informing you that Solid Edge must be licensed for first time use. Select the **OK** button.



The Solid Edge License Utility dialog will appear. Select the **I have an Academic Code** option to expose the **License key** field. Enter the **Academic Code** provided in the welcome email and select **OK** to complete the licensing phase.



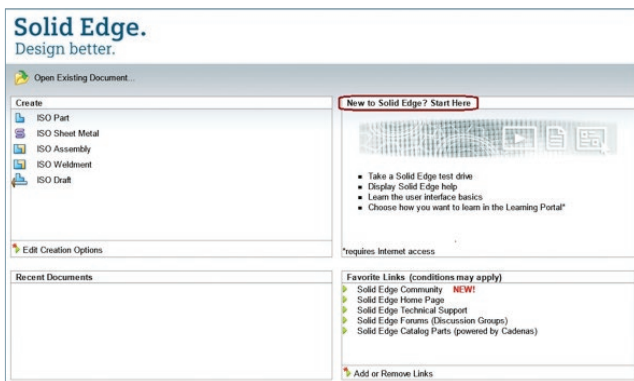
NOTE: If Solid Edge does not start immediately, select it again from the desktop icon, the startup entry, or from: "Start->All Programs->Solid Edge ST6->Solid Edge ST6".

You will be greeted by the Solid Edge academic splash screen.



As a new Solid Edge user, we highly recommend that you step through all of the learning tools available in the **New to Solid Edge? Start Here** section on the startup window.

These tools, along with the help topics, are an excellent way to get started with Solid Edge.5. Type `iPad_custom_attributes` in the **Name** box.



Siemens PLM Software community support

As part of the Solid Edge Academic Program, users will receive a number of getting-started emails containing additional hints and tips.

There is also a range of academic materials that are available at the Siemens PLM Software Academic Resource Center: www.siemens.com/plm/academic-resources

There is also a Student Edition Forum that is located at the Siemens Community Forum:
<http://community.plm.automation.siemens.com/t5/Solid-Edge-User-Community/ct-p/solid-edge>

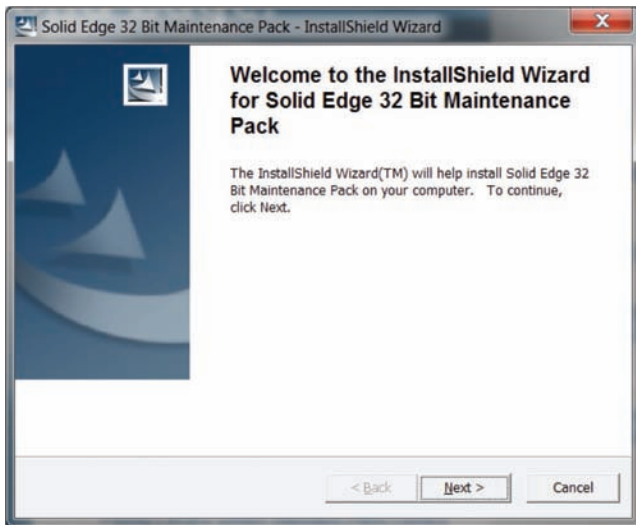
This Siemens Community Forum is dedicated to anyone looking for help, or offering help to others using the Solid Edge Student Edition. This forum serves as the primary support mechanism for Solid Edge student and high school users.

Also, please consider joining our [Solid Edge Facebook community](#) to interact with other educators, engineers and product designers around the world.

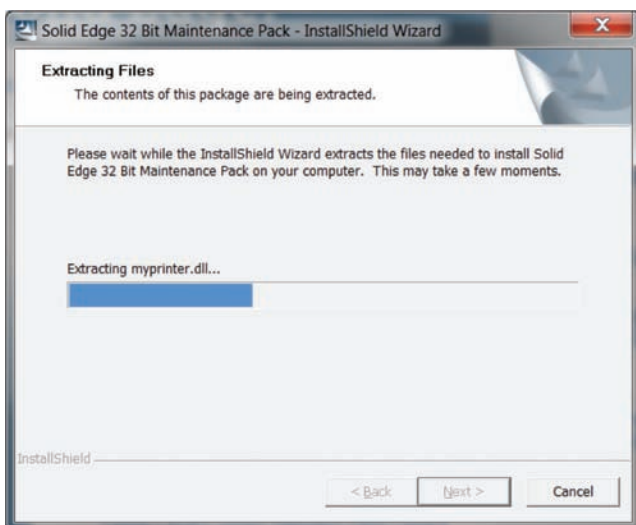
Appendix A – Automatic MP install

If your install of Solid Edge Student Edition or Solid Edge High School Edition automatically starts installing a maintenance pack, please accept the defaults in the dialogs through completion.

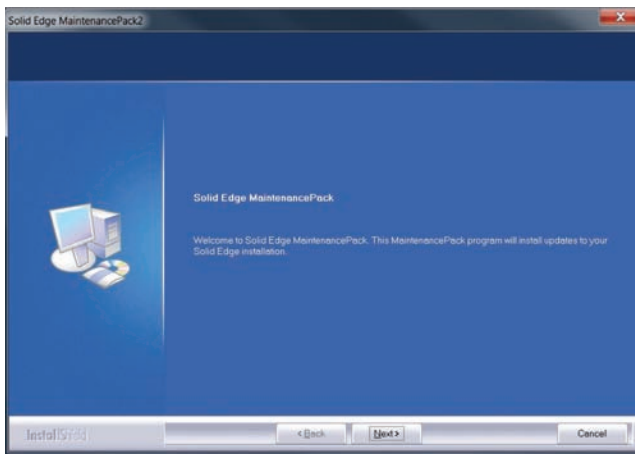
1. Maintenance Pack InstallShield Wizard: select the **Next** button.



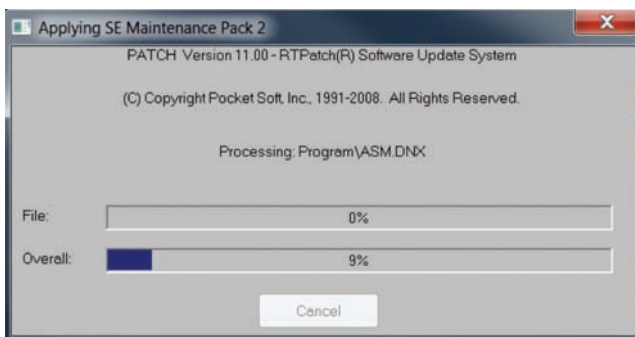
2. Extracting Files: When completed, select the **Next** button.



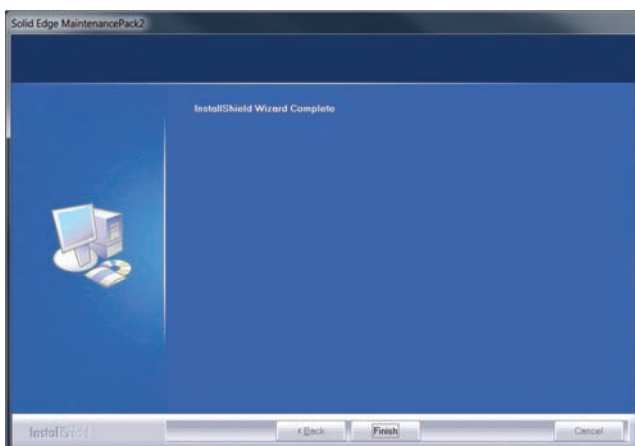
3. Maintenance Pack Installing dialog.



4. Processing/patching.



5. Maintenance pack installation completed. Select **Finish** button.



Siemens PLM Software

Headquarters

Granite Park One
5800 Granite Parkway
Suite 600
Plano, TX 75024
USA
+1 972 987 3000

Americas

Granite Park One
5800 Granite Parkway
Suite 600
Plano, TX 75024
USA
+1 314 264 8499

Europe

Stephenson House
Sir William Siemens Square
Frimley, Camberley
Surrey, GU16 8QD
+44 (0) 1276 413200

Asia-Pacific

Suites 4301-4302, 43/F
AIA Kowloon Tower, Landmark East
100 How Ming Street
Kwun Tong, Kowloon
Hong Kong
+852 2230 3308

About Siemens PLM Software

Siemens PLM Software, a business unit of the Siemens Industry Automation Division, is a world-leading provider of product lifecycle management (PLM) software, systems and services with nine million licensed seats and 77,000 customers worldwide. Headquartered in Plano, Texas, Siemens PLM Software helps thousands of companies make great products by optimizing their lifecycle processes, from planning and development through manufacturing and support. Our HD-PLM vision is to give everyone involved in making a product the information they need, when they need it, to make the smartest decisions. For more information on Siemens PLM Software products and services, visit www.siemens.com/plm.

© 2014 Siemens Product Lifecycle Management Software Inc. Siemens and the Siemens logo are registered trademarks of Siemens AG. D-Cubed, Femap, Fibersim, Geolus, GO PLM, I-deas, JT, NX, Parasolid, Solid Edge, Syncrofit, Teamcenter and Tecnomatix are trademarks or registered trademarks of Siemens Product Lifecycle Management Software Inc. or its subsidiaries in the United States and in other countries. All other logos, trademarks, registered trademarks or service marks belong to their respective holders.

42467-X5 8/14 C